

An in-vitro system for detecting the health effects of inhaled particles and gases

38

ISSN 1421-6590

A substantial fraction of inhaled particles is deposited in the lungs. The interaction of these particles with the inner lung surface and resulting possible adverse effects can be studied in lung cell culture models as developed in the present project (no 89-03), supported by the 3R Research Foundation.*

Professor Marianne Geiser has been investigating particle-lung interactions for the past 20 years, with a focus on nanoparticles for 8 years. She and her research group aim at identifying particle characteristics and cellular responses responsible for biological effects, as well as establishing new model systems. In-vitro projects are carried out in collaboration with



Marianne Geiser



Doris Lang



Melanie Savi



Annina Gaschen

Marianne Geiser Kamber
geiser@ana.unibe.ch
Institute of Anatomy
University of Bern
Baltzerstrasse 2
CH-3000 Bern 9
Switzerland
www.ana.unibe.ch

national and international laboratories. The past and current support by COST Action 633, the European Community (POLYSOA project) and the Swiss National Science Foundation, is kindly acknowledged.

Aerosols and Health

Adverse health effects associated with exposure to fine and ultrafine particles in ambient air (PM 2.5 = particulate matter $\leq 2.5 \mu\text{m}$) are well documented by epidemiology and supported by animal studies. However, the underlying mechanisms, i.e. particle properties responsible for these effects are only poorly understood. In addition, the exponentially growing production of engineered nanoparticles (NP, particles with at least one dimension $\leq 100 \text{ nm}$) urgently requires the identification of possible hazardous effects. Data for inhaled environmental particles are

particularly pressing, because this is the major route for unwanted exposure. In fact there is evidence for prolonged retention of NP in lungs, since they circumvent phagocytosis by macrophages². Consequently, the probability of NP uptake by the lung epithelium and/or translocation through it increases³, which is a desired effect in the event of future medical use of NP as diagnostic tools or as therapeutics.

Novel Particle Deposition System

Cellular responses have to be related to the dose and nature of the aerosols exposed to. For this purpose we have developed a novel particle deposition chamber mimicking closely the conditions in the lungs⁴. The advantage of this system is that particles are deposited out of a continuous gas flow very efficiently and uniformly onto the cell cultures and particle parameters are continuously monitored.

Cell Cultures Recapitulating the Inner Lung Surface

Two types of cultures were established and their function analyzed: explants and primary cell cultures from porcine or human lungs:

Organotypic explant cultures: They are obtained by microdissection of the respiratory epithelium from freshly excised porcine tracheae and primary bronchi derived from slaughtered animals. Thereby, the respiratory epithelium is carefully peeled off the trachea, placed on cell culture inserts with a microporous membrane in a two-chamber system (multiwell plates). These "explants" are maintained at the air-liquid interface (ALI), i.e. by feeding cells only at the basolateral side with sufficient medium to keep the cell layer hydrated without submerging the apical cell surface. The explants maintain their structural integrity, as regularly checked by microscopy (Fig. 2A), they continue to produce mucus and keep up ciliary beating at

physiological rates. Explant cultures can be maintained for up to 10-14 days; they represent the structure and function of the inner surface of airways best.

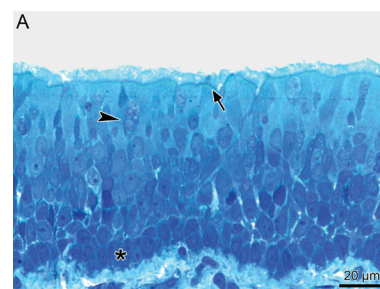


Figure 2A
Light micrograph of an epithelial explant from porcine trachea: stratified epithelium with ciliated (arrow), mucus (arrow head) and basal (asterisk) cells.

Primary cell cultures: (i) *Epithelial cells* are obtained by enzymatically dislodging them from proximal airways and either direct culturing of differentiated cells (porcine) (Fig. 2B) or expansion and re-differentiation of cells (human). Again ALI cultures on filter inserts are established, a prerequisite to attaining a well-developed epithelium with ciliary beating and mucus production. These cultures can be kept for weeks, allowing e.g. testing effects



Figure 2B
Scanning electron micrograph of primary epithelial cells from porcine trachea: apical surface of the epithelium with non-ciliated (arrow head) and ciliated (arrow) cells.

by repetitive aerosol exposures or cell recovery after aerosol-induced impairment. (ii) *Lung-surface macrophages*, the phagocytes with acknowledged importance in particle clearance from lungs, are obtained

by bronchoalveolar lavage (BAL) from (porcine or human) lungs. They are either directly cultured on filter inserts to study cell-type specific responses to aerosol exposures, or co-cultured with epithelial cell cultures, by adding them in appropriate number concentration on top of the epithelial cell cultures in order to investigate macrophage-epithelial cell interactions.

Exposures of Cell Cultures

First experiments were performed to investigate the effects of secondary organic aerosols (SOA, particles formed in a smog chamber from precursor molecules with UV-light) on epithelial cells and macrophages separately⁵. Cell cultures were exposed in the novel particle deposition chamber for 2 hours to the aerosol or as control to particle-free air. Cellular responses were examined within 24 hours after aerosol exposure: Cellular integrity was evaluated by electron microscopy, cytotoxicity by lactate dehydrogenase (LDH) release, inflammatory processes by interleukins (IL-6, IL-8) and tumor-necrosis factor (TNF-

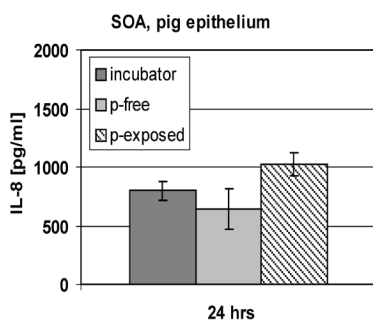


Figure 3 Responses of epithelial cell cultures to SOA exposure. In this experiment, there is evidence for an increased inflammatory response in SOA exposed cell cultures, compared to untreated control cultures ("incubator") and controls exposed to particle-free air (p-free).

α) release, and phagocytic activity of macrophages by post-exposure treatment with inert particles. The exposure to SOA in concentrations comparable to environmental concentrations resulted in small, but specific inflammatory effect, as illustrated in Fig. 3 for epithelial cells. In future experiments dose-response relationships will be established.

Less experiments with healthy and diseased animals

The organotypic airway epithelial explant cultures established in this project incorporate all cell types in their real number concentration

and distribution, and they keep up organ-specific functions, i.e. ciliary beating and mucus secretion. They may be obtained from various animal species. We have chosen pigs' lungs because of their similarity to human lungs and good availability. The disadvantage of having a limited life span is counterbalanced by their genuine structure and function.

Explants from human airways are hardly available. As a substitute, the re-differentiated human epithelial cells together with macrophages can be used at the expense of some loss of authentic structure and function.

The models we have established allow the study of particle effects without living animals at cellular and molecular levels, mainly in two in different areas: (i) hazard identification of inhaled ultrafine particles generated by combustion processes, e.g. by diesel engines and wood-burning stoves and of newly-produced nanomaterials; (ii) evaluation of new therapeutic aerosols to treat lung and systemic diseases. Moreover, the model system now representing the healthy lung may be replaced by a replica of diseased lungs eventually reducing the need for experiments with diseased animals.

References

- Geiser M, Schürch S, Gehr P. Influence of surface chemistry and topography of particles on their immersion into the lung's surface-lining layer. *J Appl Physiol* 94:1793-1801 (2003)
- Geiser M, Casaulta M, Kupferschmid B, Schulz H, Semmler-Behnke M, Kreyling W. The role of macrophages in the clearance of inhaled ultrafine titanium dioxide particles. *Am J Respir Cell Mol Biol* 38:371-376 (2008)
- Geiser M, Rothen-Rutishauser B, Kapp N, Schürch S, Kreyling W, Schulz H, Semmler M, Im Hof V, Heyder J, Gehr P. Ultrafine particles cross cellular membranes by non-phagocytic mechanisms in lungs and in cultured cells. *Environ Health Perspect* 113:1555-1560 (2005)
- Savi M, Kalberer M, Lang D, Ryser M, Fierz M, Gaschen A, Rička J, Geiser M. A novel exposure system for the efficient and controlled deposition of aerosol particles onto cell cultures. *Environ Sci Technol* 42: 5667-5674 (2008)
- Baltensperger U, Dommen J, Rami Alfarra M, Duplissy J, Gaeggeler K, Metzger A, Facchini MC, Decesari S, Finessi E, Geiser M, Savi M, Lang D, Kalberer M, Geiser T. Combined Determination of the Chemical Composition and of Health Effects of Secondary Organic Aerosols: the POLYSOA Project. *J Aerosol Med Pulm Drug Deliv* 21:145-154 (2008)

* The Inner Surface of the Lungs

The size and cellular composition of airways and alveoli vary considerably in different compartments of the lung and between species. However, as shown in Fig. 1A, the inner lung surface is built of the same basic structural elements. It is made up of 3 components: (i) the liquid lining layer consisting of the aqueous phase with the lubricant pericellular and mucus layers, and the surfactant film at the air-liquid interface; (ii) the mobile cells, i.e. mainly macrophages submersed in the aqueous phase and (iii) the highly differentiated epithelium with its basement membrane. Beneath it, the subepithelial connective tissue containing the blood vessels and further cells of the immune system.

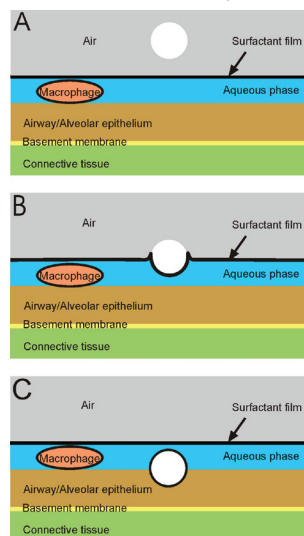


Figure 1 Basic components of the inner lung surface.

it is essential to mimic the in-vivo interactions with all 3 components. This is not the case for most of the commonly used in vitro approaches but realized in the present project.

The mechanisms, the pattern and efficiency of particle deposition in the respiratory tract largely depend on particle size. Deposited particles are retained in the lungs for various times before being cleared, depending on the deposition location, the fine pulmonary structure, and the particle characteristics. Mucociliary transport and phagocytosis by macrophage are the ultimate clearance systems in the lungs and their effective activity is essential for respiratory health.



3R Research Foundation Switzerland

Reduction, Refinement and Replacement
in Animal Experimentation

Swiss Consensus Platform for 3R-Alternatives

www.forschung3r.ch

Office | Dorfplatz 5
P.O. Box 1372 | CH-3110 Münsingen
Phone +41 31 722 08 30
Fax +41 31 721 70 80
forschung3r@bluewin.ch

Scientific Information | Prof. Dr. P. Maier
P.O. Box 1372 | CH-3110 Münsingen
Fax +41 31 722 08 34
research.3r@bluewin.ch